

Body and heat sink

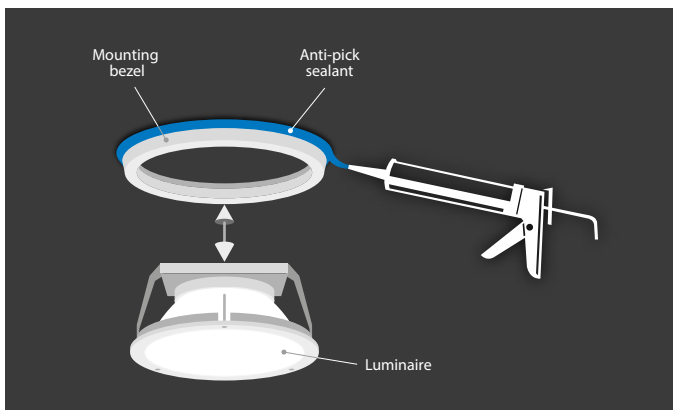


- 1** Remote Driver for standard versions.
- 2** Downlighter Power Unit for Emergency and AutoTest versions.

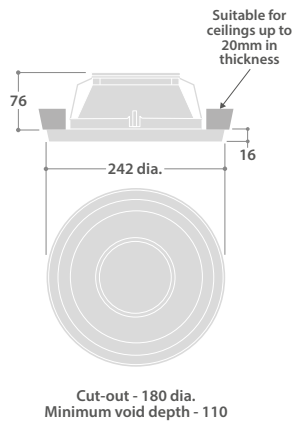


- 3** SmartScan Radar Power Unit for SmartScan Radar and SmartScan Radar Emergency versions.

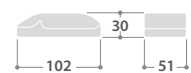
EASY COVER REMOVAL



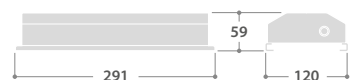
DIMENSIONS



Standard Remote Driver



Downlighter Power Unit for SmartScan Radar, SmartScan Radar Emergency, Emergency and AutoTest versions



CIRCULAR LIGATURE-RESISTANT
RECESSED LED DOWNLIGHTERS

IP20 ABOVE CEILING IP65 BELOW CEILING



SPECIFICATION

- Steel cover ring and mounting bezel finished full polyester non-yellowing satin white (RAL 9016)
- Injection moulded reflector finished white
- Choice of 4mm thick clear or satin polycarbonate front cover
- Anti-pick sealant can be used to seal the mounting bezel whilst still allowing the luminaire to be removed for maintenance
- SmartScan Radar versions with sensor discretely hidden behind the cover
- Emergency and AutoTest versions
- Supplied with remote gear unit fitted with 2m supply lead
- Cover secured using tamper-resistant pin Torx screws (Requires T20 tool - see Accessories table below)
- 8W and 16W very high efficiency versions
- Fitted with 4000K LEDs



LED CHARACTERISTICS

CRI	80+
COLOUR TEMPERATURE	4000K
RATED LIFE (HOURS)	63K - L80/B10
PROTECTION	LUX GUARD
DRIVER EFFICIENCY	>85%
REPLACEABLE	YES
POWER FACTOR	>0.9

LL/CW 106.5

ENERGY EFFICIENCY CLASSIFICATION C

For LED characteristics explanation see
www.thorlux.com/led-guide

SmartScan Radar Configurations

Find out more at www.thorlux.com/smartsan

RANGE

LED	CLEAR VERSION	SATIN VERSION	APPROX. kg	CIRCUIT
8W	GT 20194	GT 20196	2.7	L/A/R
16W	GT 20195	GT 20197	2.7	L/A/R

CIRCUIT TYPE - suffix catalogue number with:

L - non-dimming (LED) / **A** - dimming (DALI) / **R** - SmartScan Radar e.g. GT 20194L etc.
SmartScan Radar add 0.1kg to weights listed.

EMERGENCY VERSION - prefix catalogue number with:

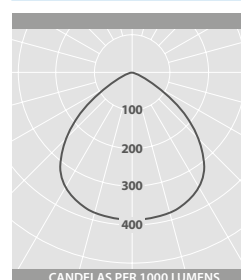
EGT - Emergency
TGT - AutoTest (Not available when selecting the 'R' suffix)**WGT** - SmartScan (Not available when selecting the 'A' suffix)
e.g. WGT 20194L etc.

Add 0.9kg to weights listed.

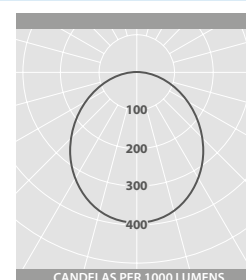
ACCESSORIES

DESCRIPTION	CAT. No.	APPROX. kg
T20 pin Torx bit (Suitable for magnetic bit holder)	KEY 16975	-

PHOTOMETRIC GUIDE



CLEAR POLYCARBONATE

Luminaire Lumen Output
8W = 1065lm
16W = 1940lm

SATIN POLYCARBONATE

Luminaire Lumen Output
8W = 835lm
16W = 1650lmPresence Detection Guide - www.thorlux.com/files/presence-detection.pdf