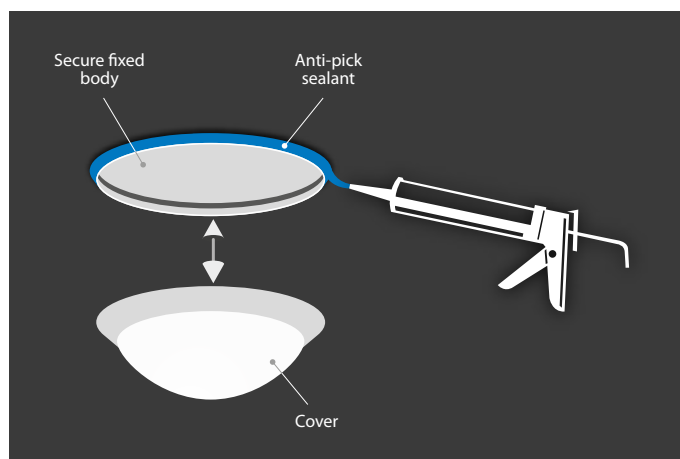


ARCADIAN



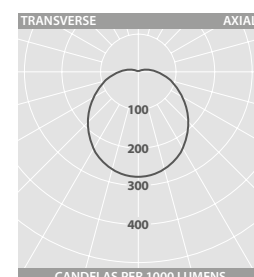
EASY COVER REMOVAL



MOUNTING OPTIONS



PHOTOMETRIC GUIDE



LED	3000K (lm)	4000K (lm)
21W	2555	2705
27W	3375	3565



LED LIGATURE-RESISTANT LUMINAIRES



SPECIFICATION

- Strong spun steel body
- Injection moulded 5mm thick polycarbonate cover with white painted trim as standard (RAL 9010). Other colour trim options available to special order
- Ligature-resistant design
- Anti-pick sealant can be used to seal the body whilst still allowing the cover to be removed for maintenance
- Tamper-resistant pin Torx screw fixings (requires T25 tool - see accessory table)
- SmartScan wireless technology removes the need for control cabling. Ideal for retro-fit
- SmartScan Radar versions with sensor discretely hidden behind the cover
- Fitted with 3000K or 4000K LEDs

LED CHARACTERISTICS

CRI	80
COLOUR TEMPERATURE	3000K/4000K
RATED LIFE (HOURS)	100K L80/B10
PROTECTION	LUX GUARD
DRIVER EFFICIENCY	>85%
REPLACEABLE	YES
POWER FACTOR	>0.95
LL/CW	104.9

For LED characteristics explanation see www.thorlux.com/led-guide

SmartScan Configurations



Find out more at www.thorlux.com/smartscan

RANGE

LED	CAT. No.	CIRCUIT	APPROX. kg
21W 3000K	AN 17074	R/L/A	3.1
21W 4000K	AN 17075	R/L/A	3.1
27W 3000K	AN 19208	R/L/A	3.1
27W 4000K	AN 19209	R/L/A	3.1

CIRCUIT TYPE - suffix catalogue number with:

R - SmartScan Radar / **L** - non-dimming (LED) / **A** - dimming (DALI)
e.g. **AN 17074R** etc.

SmartScan Radar add 0.1kg to weights listed.

EMERGENCY VERSION - prefix catalogue number with:

TAN - AutoTest (Not available when selecting the 'R' suffix)

WAN - SmartScan

e.g. **WAN 17074R** etc.

Add 0.3kg to weights listed.

INTEGRAL NIGHT LIGHT VERSION - suffix catalogue number with:

N e.g. **AN 17074LN** etc.

ACCESSORY

DESCRIPTION	CAT. No
T25 pin Torx bit (Suitable for magnetic bit holder)	KEY 16976

DIMENSIONS

